

■ General Specifications

Working height, nominal	
42	48.2 ft (14.81 m)
50	56.0 ft (17.07 m)
Platform height, maximum	
42	42.6 ft (12.98 m)
50	50.2 ft (15.30 m)
Platform reach, maximum	
42	20.1 ft (6.13 m)
50	28.0 ft (8.53 m)
Length, overall - booms down and retracted	
42	20.7 ft (6.30 m)
50	21.0 ft (6.40 m)
Width, overall	
90 in (2.29 m)	
Height	
(booms down & retracted) 83 in (2.11 m)	
Wheelbase	
96 in (2.44 m)	
Ground clearance	
7 in (17.8 cm)	
Tailswing, stowed	
42	16 in (0.41 m)
50	15 in (0.38 m)
Weight, approximate	
42	13,600 lbs (6,170 kg)
50	15,280 lbs (6,930 kg)
Wheel loading, single - maximum	
42	7,050 lbs (3,200 kg)
50	7,890 lbs (3,580 kg)
Ground pressure, standard tires - maximum	
42	68 psi (469 kPa)
50	77 psi (529 kPa)
Gradeability	
2-wheel drive	25%
4-wheel drive	40%
Platform size:	
Standard	30 x 72 in (76 x 183 cm)
Optional	30 x 96 in (76 x 244 cm)
Unrestricted rated work load	
(total weight of personnel, tools, and equipment that platform is designed to carry above its floor):	
Load weight	500 lbs (227 kg)
Occupants	2 people
Travel speeds	
Booms down and retracted	3.5 mph (5.6 km/h)
Booms up and/or extended	0.5 mph (0.8 km/h)

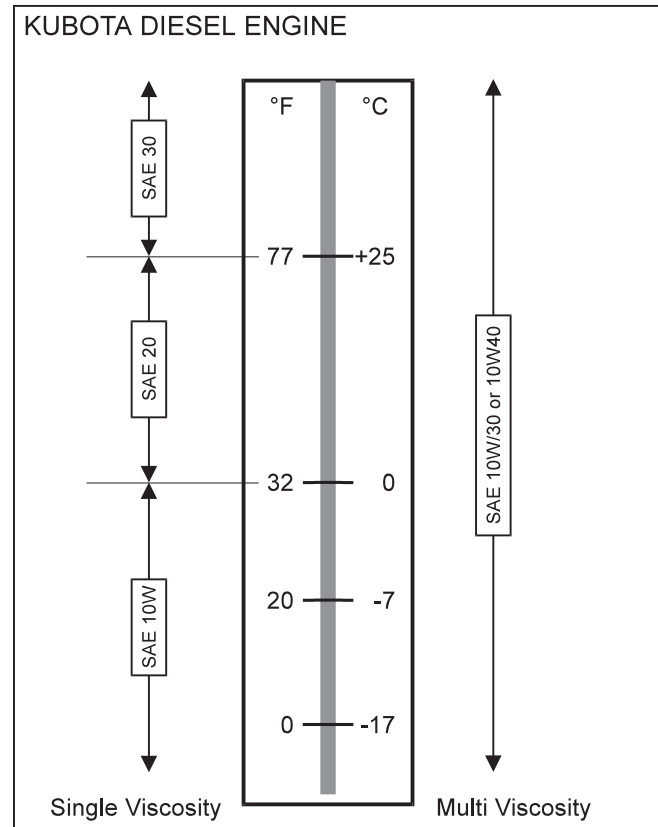
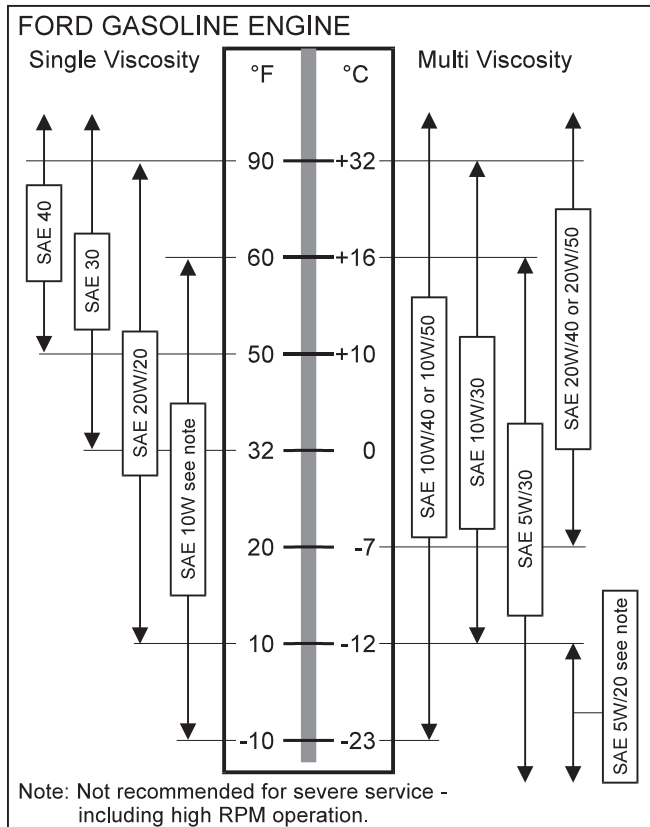
Turning radius	
2-wheel steer, inside	89 in (2.26 m)
2-wheel steer, outside	205 in (5.21 m)
4-wheel steer, inside	45 in (1.14 m)
4-wheel steer, outside	124 in (3.15 m)
Tires	
12 x 16.5 (30.5 x 42), 8 ply	
Electrical system	
12 V dc (neg. chassis ground)	
Environmental operating ranges:	
ambient air temperature	
Fahrenheit	0°F to +110°F
Celsius	-18°C to +43°C
Wind speed	
(maximum gust or steady) 28 mph (45 km/hr)	
Fuel tank capacity	
Gas or diesel	15 gal USA (56.8 liters)
Optional LPG	43.5 lbs USA (20 kg)
Hydraulic oil	
Pressure, maximum - 42	3,200 psi (22,080 kPa)
Pressure, maximum - 50	3,500 psi (24,150 kPa)
Tank capacity	16.5 gal USA (62.5 liters)
Maximum temperature at tank	200°F (93°C)
Hydraulic oil type and grade recommended	
Above 10°F (-13°C)	Mobil DTE-13M
Below 10°F (-13°C)	Mobil DTE-11M
Boom times, (complete range of movement):	
Turntable Swing, 360°	
CW or CCW	60 - 70 seconds
Platform Rotation, 180°	
CW or CCW	15 - 20 seconds
Main Boom Elevation, +75°/-1° to horizontal	
UP:	30 - 35 seconds
DOWN:	20 - 25 seconds
Riser Boom Elevation	
UP:	55 - 60 seconds
DOWN:	55 - 60 seconds
Jib Boom, +45°/-75° to horizontal	
UP:	25 - 30 seconds
DOWN:	15 - 20 seconds
Noise level	
Diesel	108 db(A)
Gasoline	110 db(A)

3. Specifications

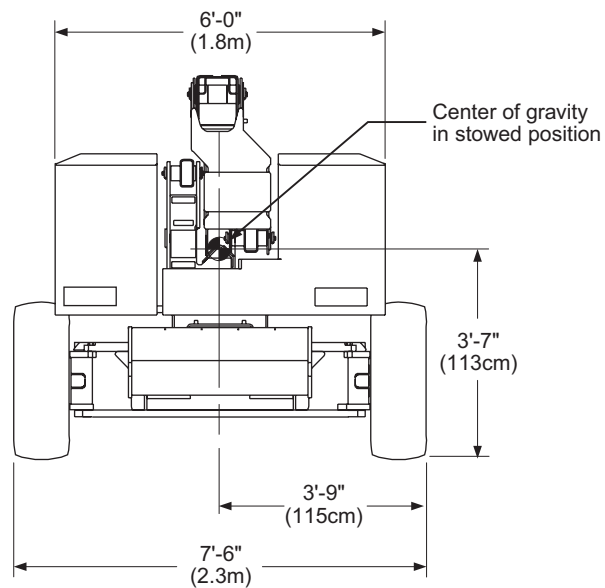
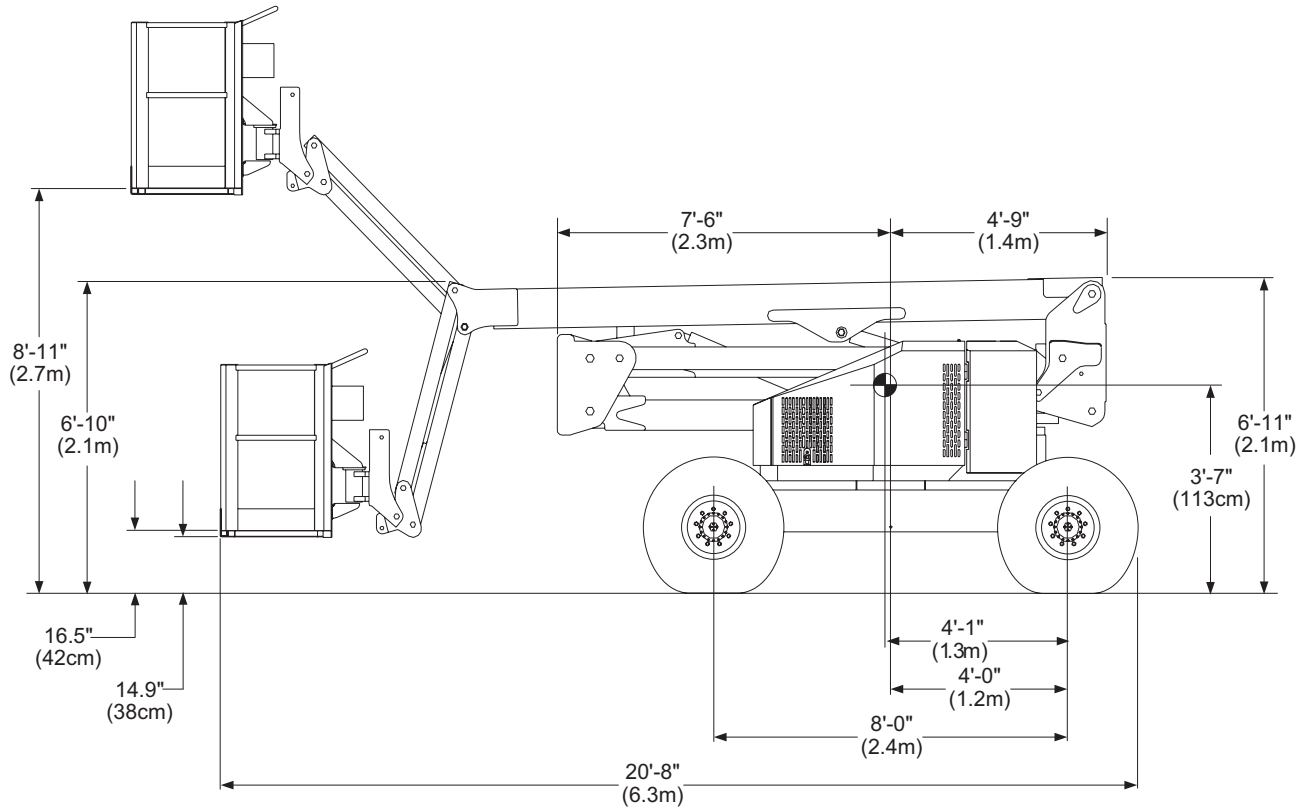
Engine Data

Engine Make	Ford (gasoline)	Ford (LPG)	Kubota (diesel)
Model	VSG 411 or VSG 413		V1305
Fuel	gasoline	LPG (liquefied petroleum gas)	diesel
Fuel Grade	Unleaded 87 octane (motor method) Do not use gasoline blended with methyl alcohol.	HD5 Gas Processors Association Standard 2140. Category: special duty propane	Diesel fuel No. 2-D (ASTM D975)
Coolant	50% water + 50% ethylene glycol		
Operating Temperature	160°F - 190°F (71°C - 88°C)		180°F - 205°F (82°C - 96°C)
Oil Capacity	3.5 qt USA (3.25 liters)		1.59 gal USA (6.0 liters)
Oil Grade	API: SG, SG/CC, or SG/CD		API: CD/CE
Oil Weight	see chart below		
Running Time (one tank fuel)	A full tank of gasoline, or diesel, will last an entire eight hour shift, under normal working conditions. It normally takes two tanks of LPG per eight hour shift.		

Engine Oil Charts

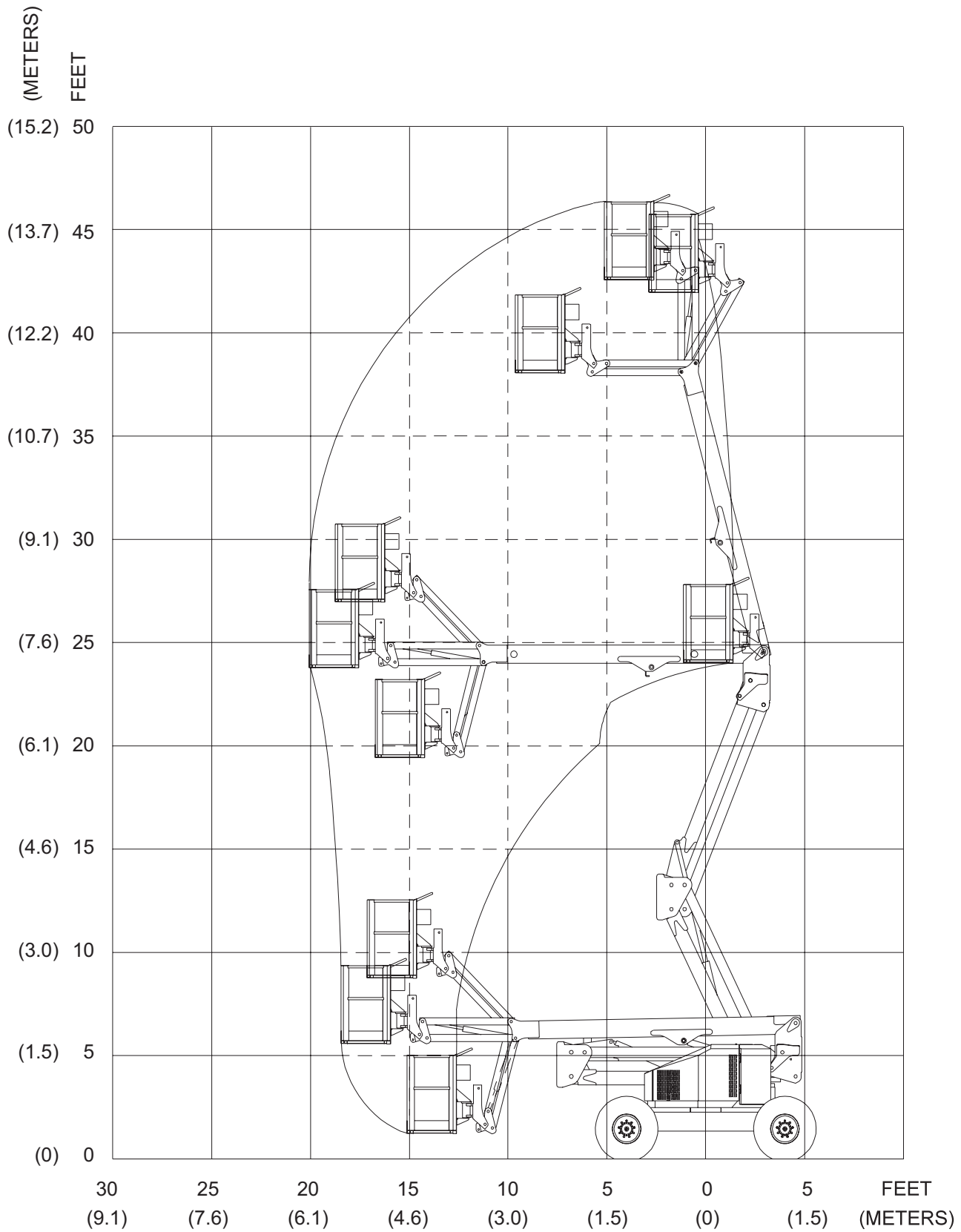


Overall Dimensions - ATB 42

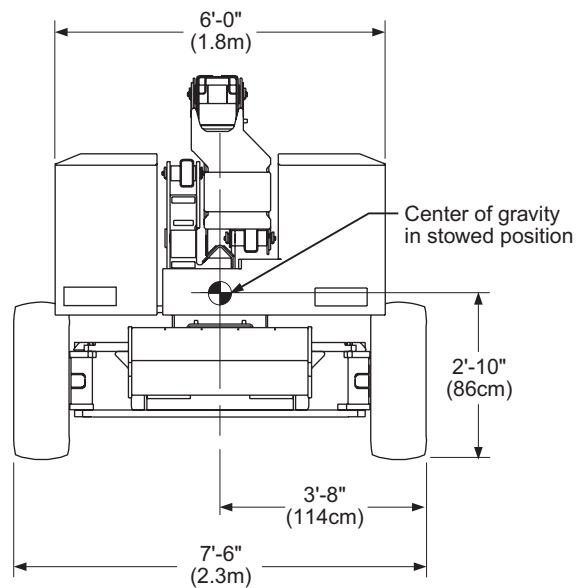
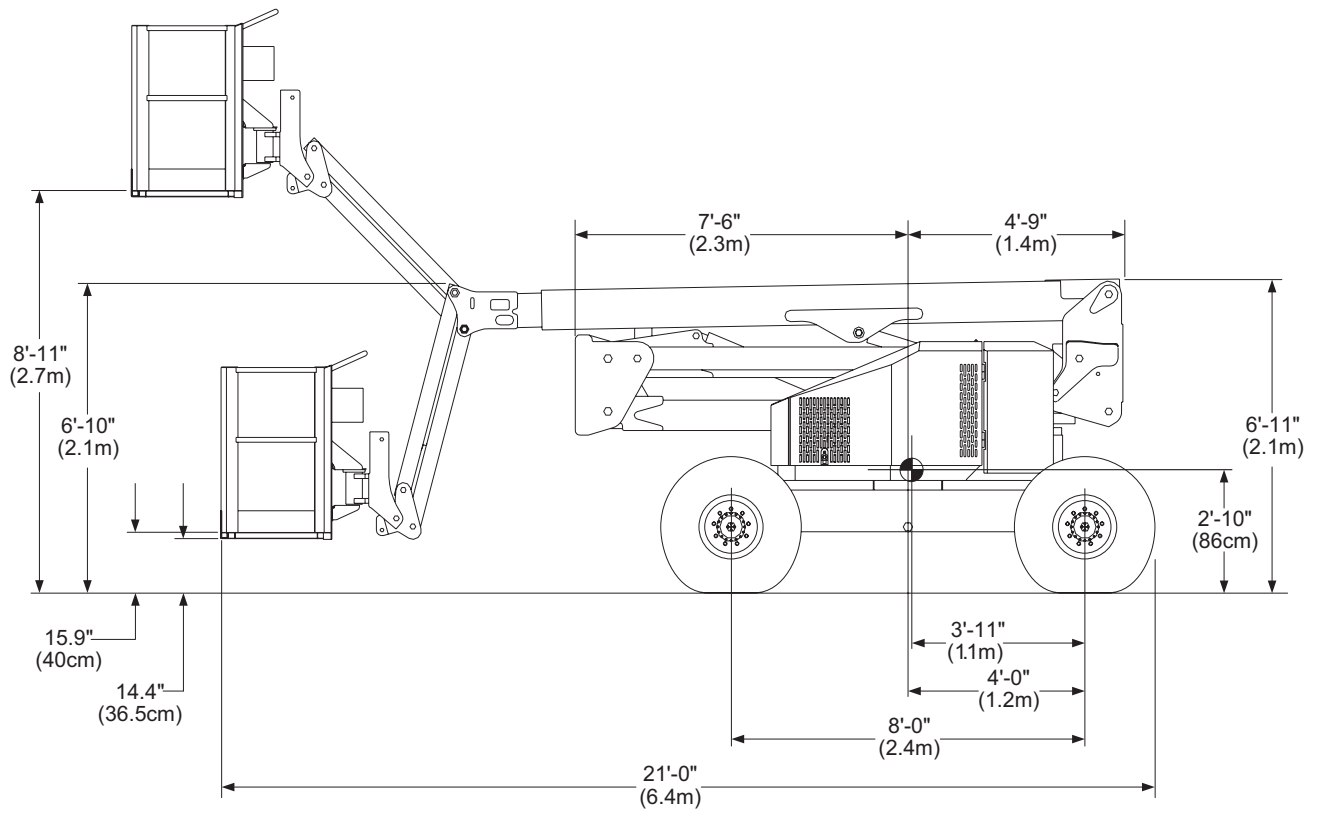


3. Specifications

Working Envelope - ATB 42

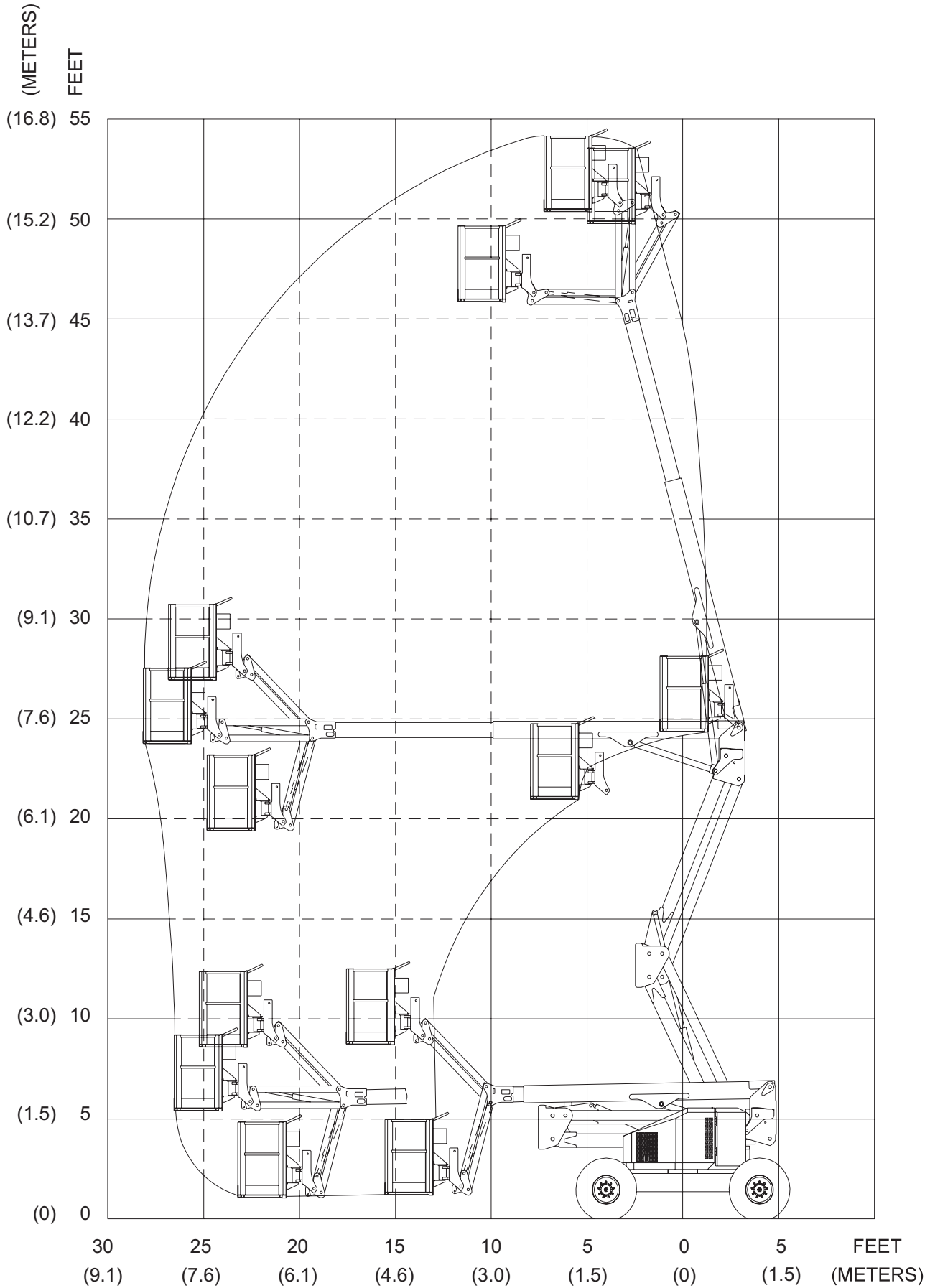


Overall Dimensions - ATB 50



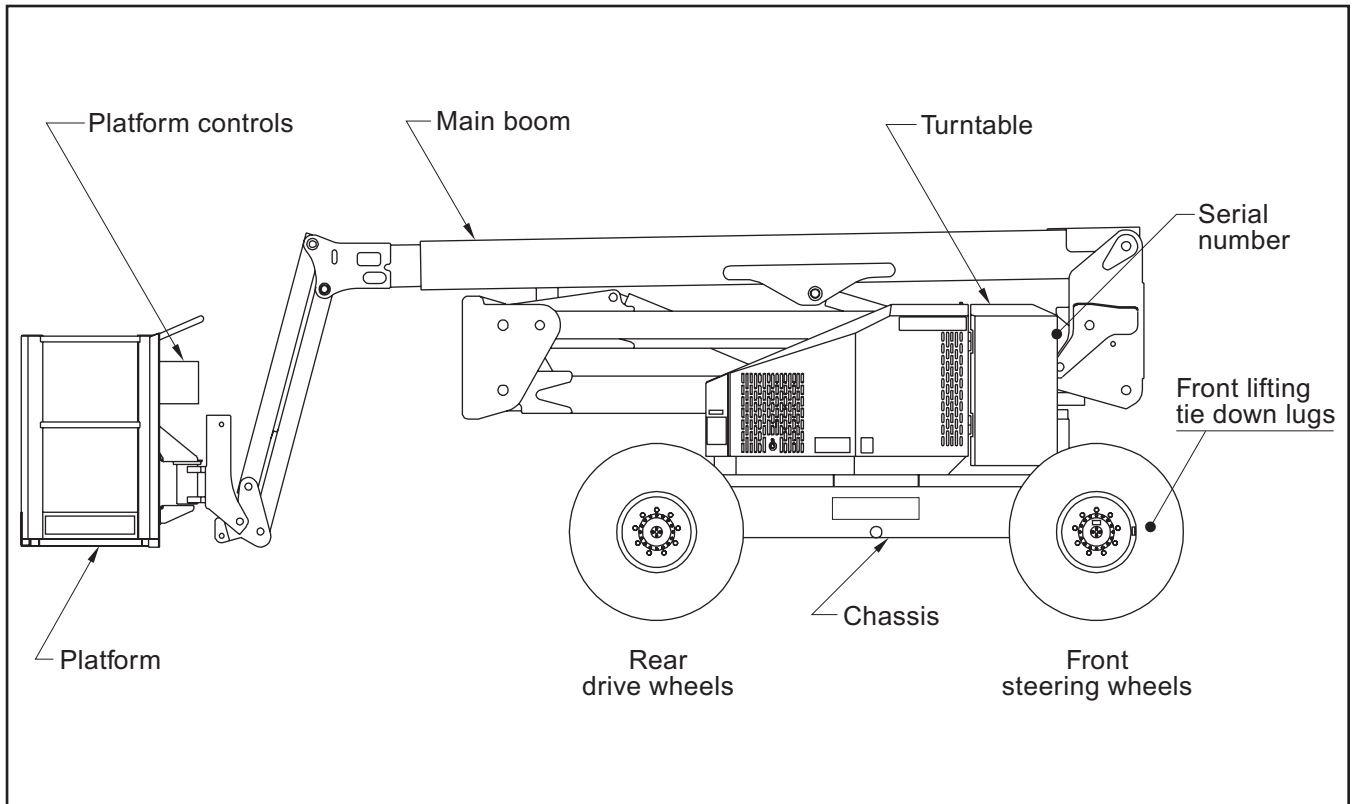
3. Specifications

Working Envelope - ATB 50

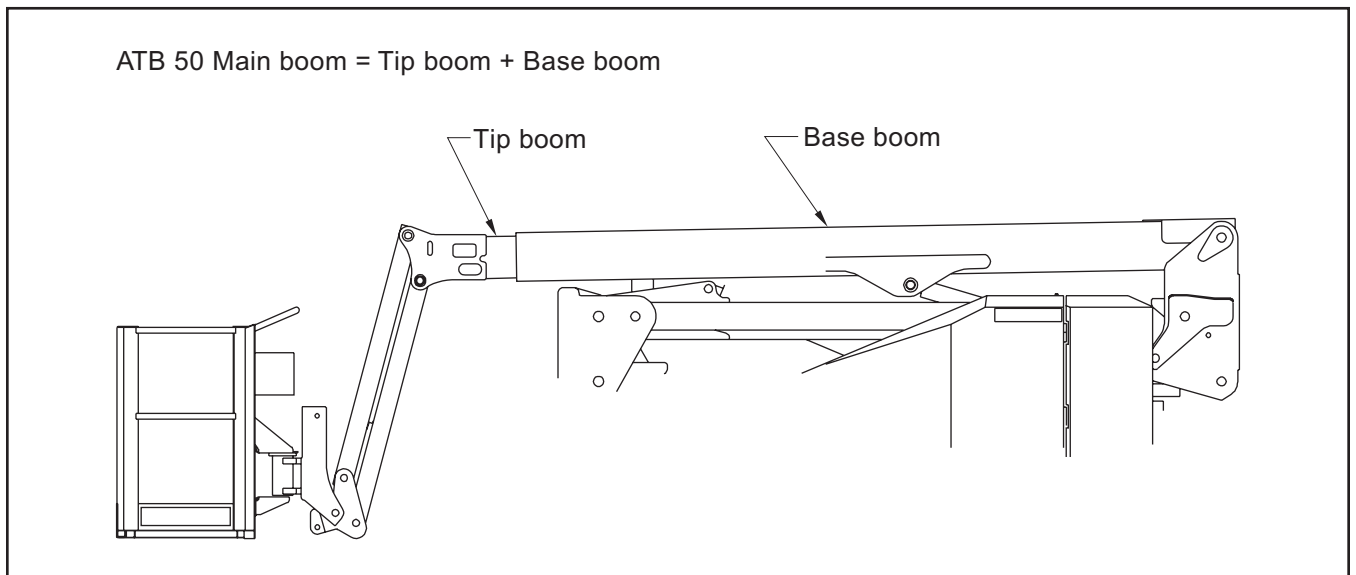


■ Nomenclature and Serial Numbers

□ Right Side View Of Machine

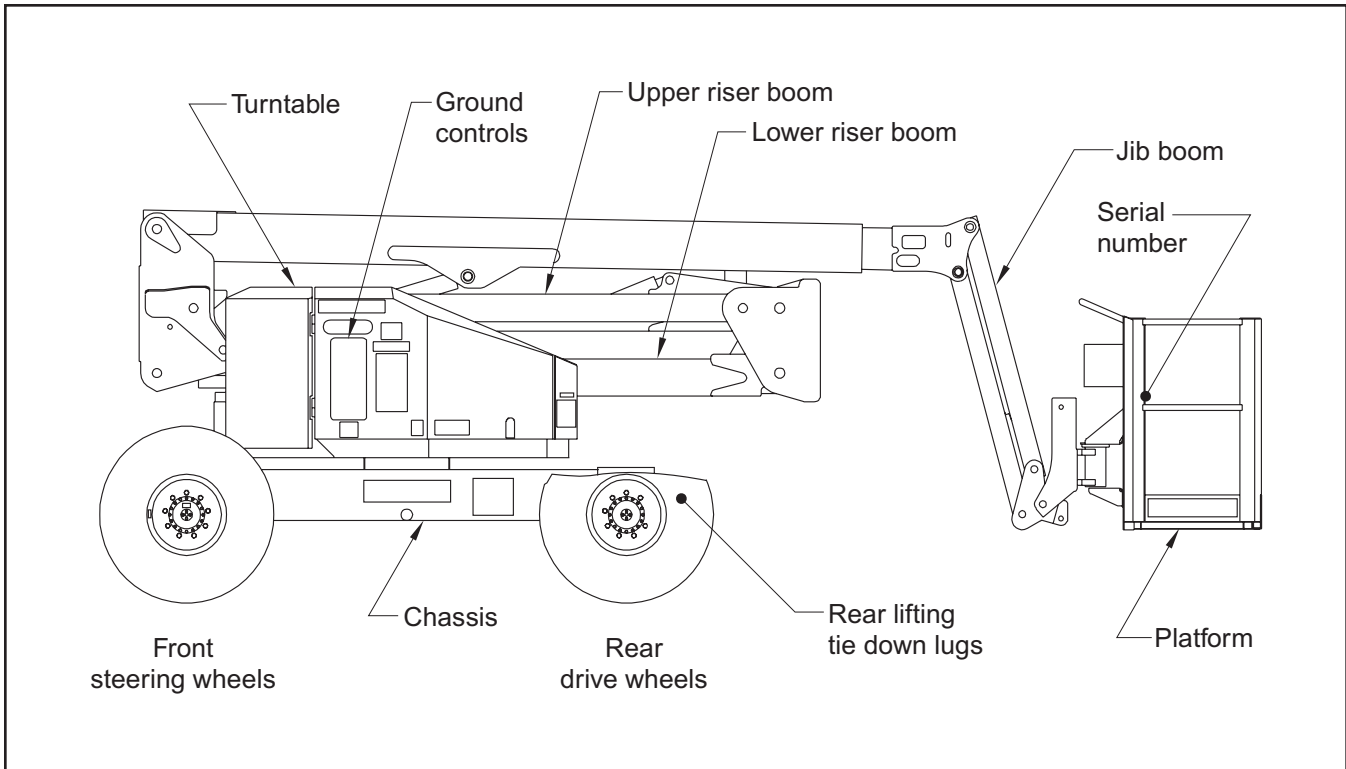


□ Booms Identification



3. Specifications

Left Side View Of Machine



Serial Number Location

